

Troubleshooting, Restoration & Recommissioning of GC700XA at 1223MW CCPP Balloki Power

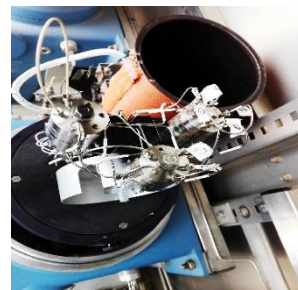
Customer:

GE Power - Project site is one of the CCPP with 1223 MW production capacity, is committed to its mission of tackling the challenges of the new energy future. Customer's aim is to meet the energy needs of society, in ways that are economically, socially and environmentally viable, now and in the future.



Challenges:

- At first, EE was called for calibration services of the Gas Chromatograph, however, upon visit, EE certified engineer found that the GC was completely out of service.
- EE engineer discussed the matter with Customer and End User and both were pointing each other on GC current issue and both of them had limited time as they want to close the case as soon as possible. Later on, GE requested to EE engineer to perform detailed evaluation of GC and submit a report highlighting all issues.
- After reviewing submitted report GE advised EE to provide a turnkey Solution for a complete restoration of GC as any repairs / warranty claims of GC systems will be covered under Gas Turbine LTSA agreement.



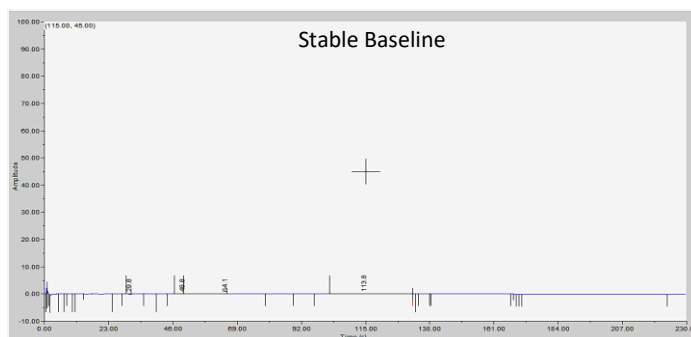
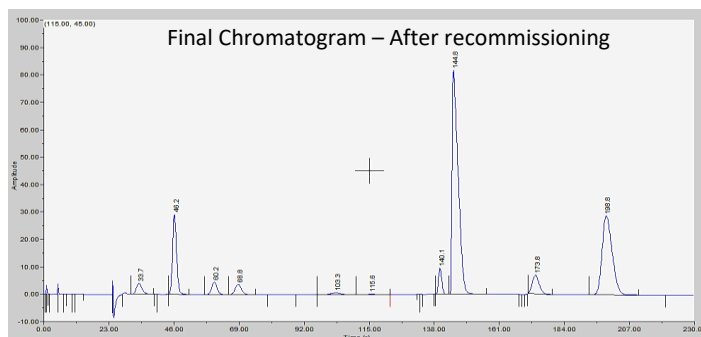
Before Replacement

Solution:

- EE provided a turnkey solution to GE including all required spares and services to complete the restoration Job.
- EE certified engineers started the GC restoration activity as soon as replacement spares reached project site. EE engineers dismantled faulty parts and replaced with the new spare parts following the factory standards. And powered the system to check the health and performance of newly installed spares.
- EE engineers performed the system pressure and flow tunings in order to match the factory design parameters. Following that EE team carried out the tunings for baseline stability and measuring components in order to get repeatable results as close as to calibration standards.
- After verification of results and parameters, GC calibration was carried out and after successful completion of final calibration all the results were witnessed by GE and End user representatives.
- EE engineers performed recommissioning and handed over the GC system to customer.



After Replacement



Results:

EE was successful partner for major GC restoration & recommissioning project.